

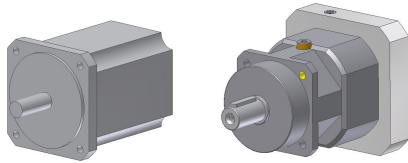
Assembly Instruction

ESP – Gearbox

ESP060 to ESP180

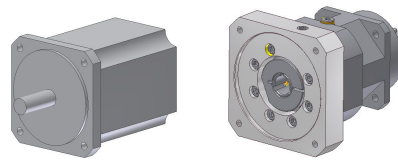


1.



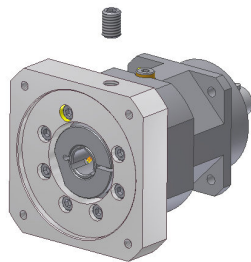
DIN 42955-N
Select exact motor (without keyway)
Select correct gearbox

2.



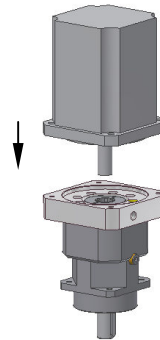
Free mounting parts from grease
Remove potential damages

3.



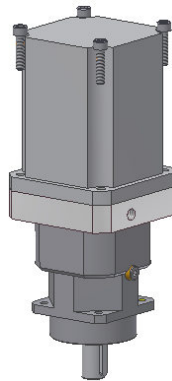
Adjust the position of the clamping hub
Open clamping screw

4.



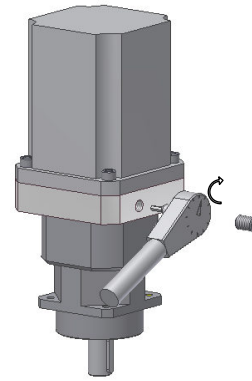
Preferred mounting direction: vertical
Fit motor in gearbox

5.



Motor flange must fit to gearbox flange
Screws have to be secured
Fastening torque of screws: 90% of screw yield stress; tighten them cross-wise

6.



Tighten clamping screw with M_A
Insert sealing screw

Gearbox	ESP060	ESP075	ESP100	ESP140	ESP180
Torque of clamping screw M_A [Nm]	10	to Ø19: 10 from Ø24: 35	35	35	on request
SW [mm]	4	5	5	8	on request